

IUC PFBT PhaseI

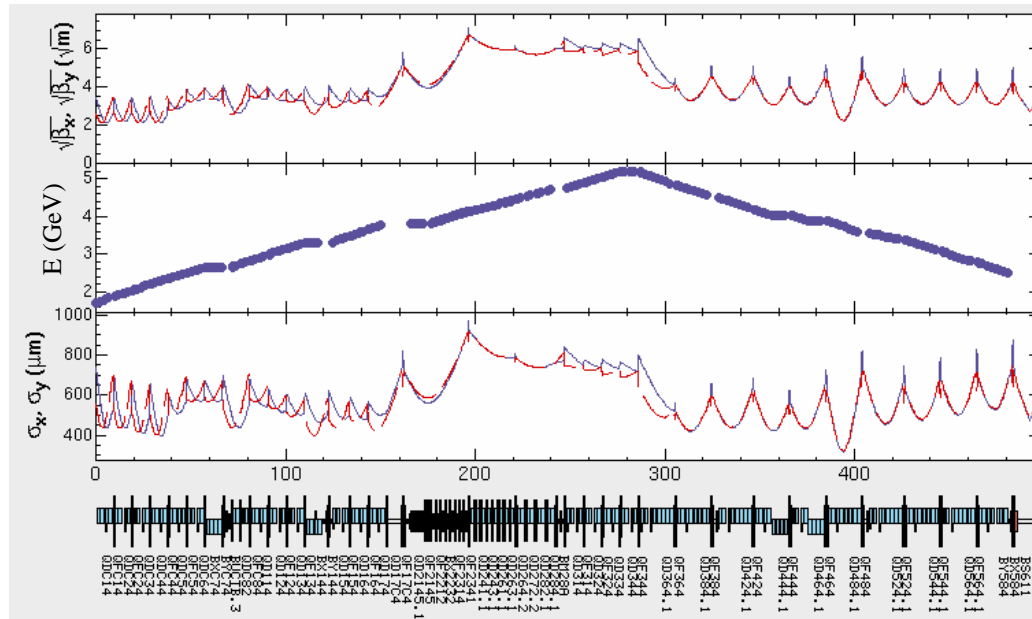
2005/6/24 N.Iida

- PF-KEKB Optics Matching
- 変更:三橋架台

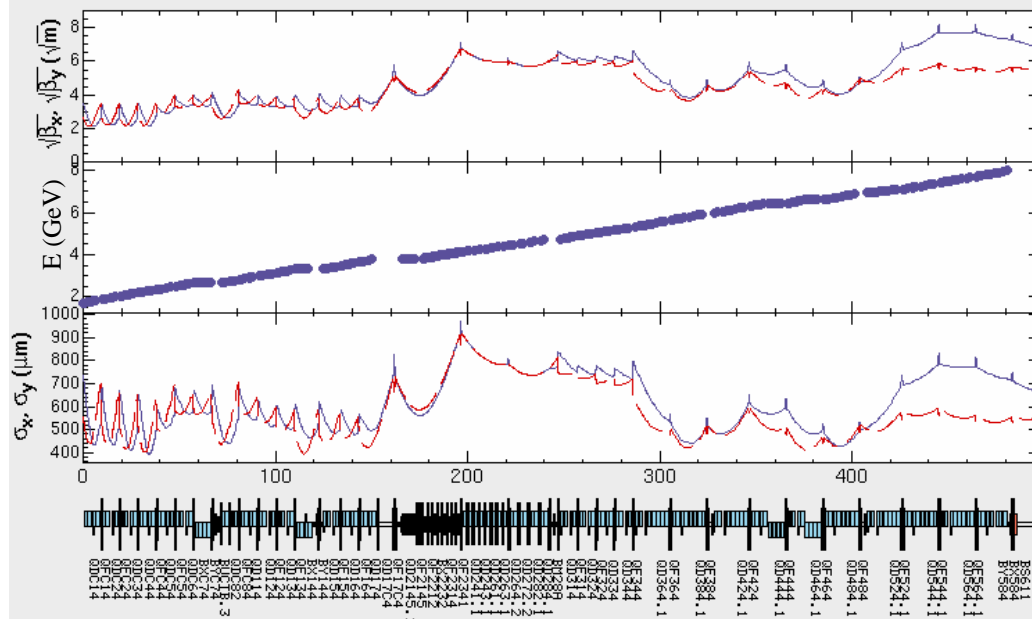
PF-KEKB Optics Matching

Optics by Onishi

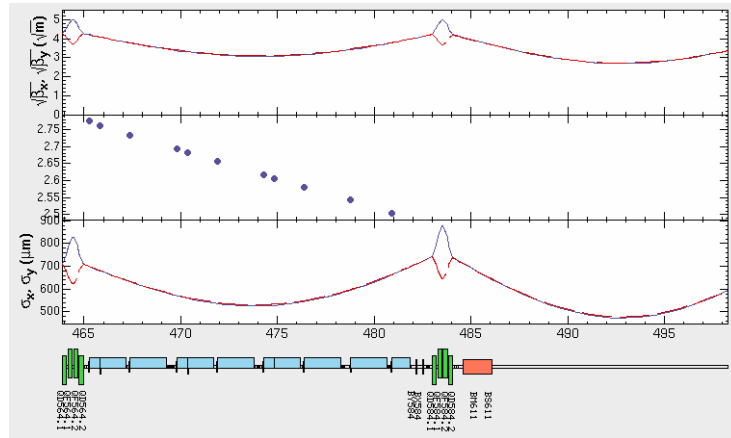
2.5 GeV
90 ° cell



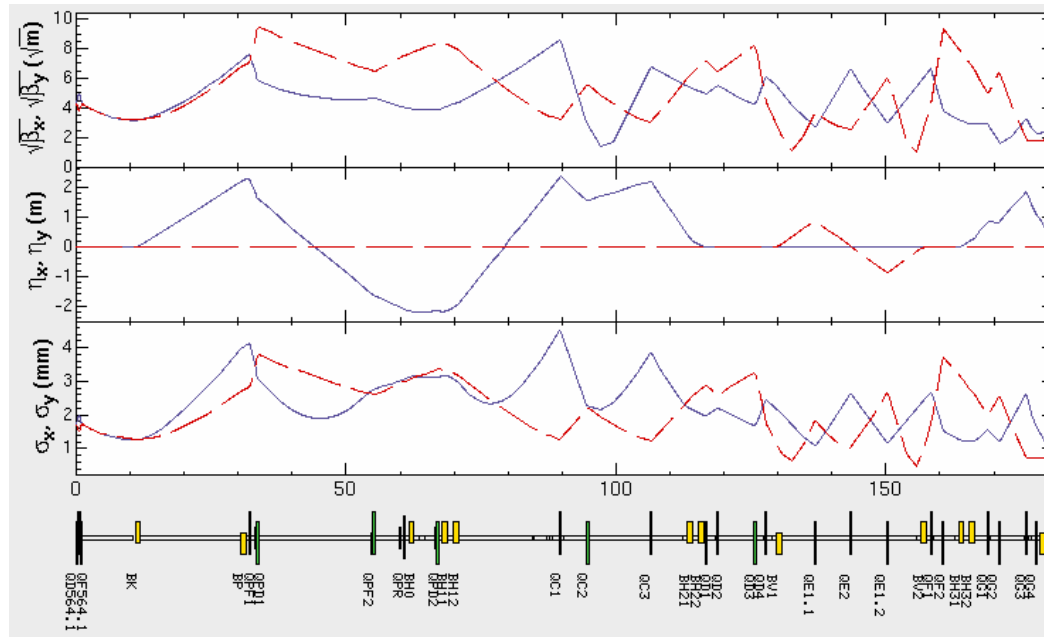
8.0 GeV



PF 2.5 GeV

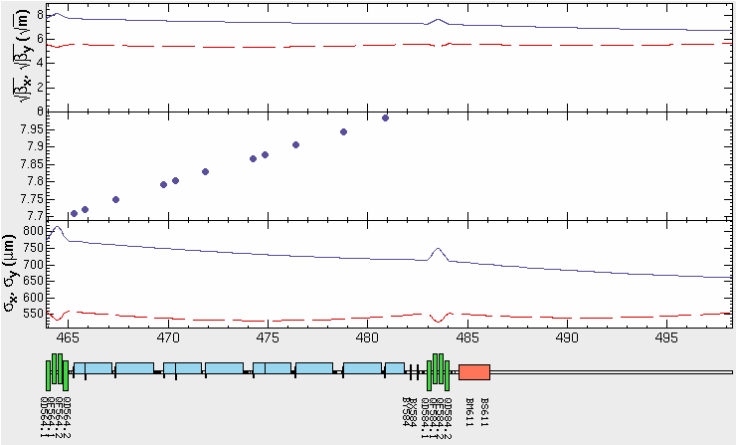


W3.8.2



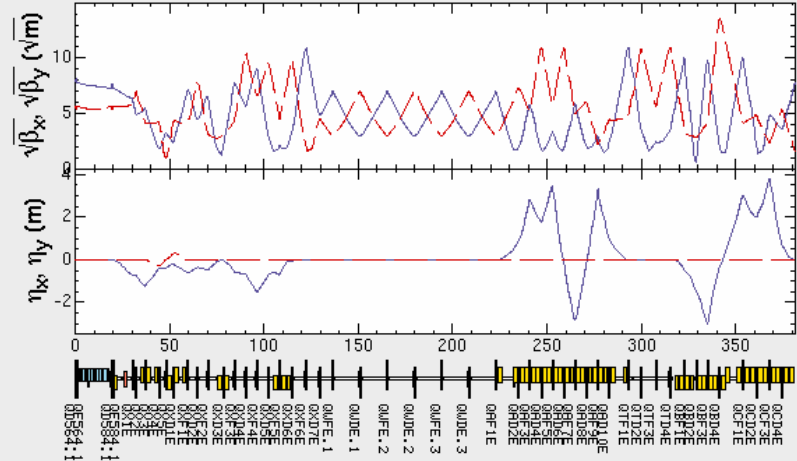
Variable	Keyword	Now	! Previous	Saved	Minimum	Maximum
QPF1	K1	.209148503069	! .210429022	.210429022	-.23000000	.23000000
QPD1	K1	-.196619058097	! -.197661619	-.197661619	-.23000000	.23000000
QPF2	K1	.042887423249	! .043252882	.043252882	-.23000000	.23000000
QPD2	K1	-.020387153407	! -.019661503	-.019661503	-.23000000	.23000000
QC1	K1	.166582664562	! .167049668	.167049668	-.23000000	.23000000
QC2	K1	-.142884348262	! -.141843557	-.141843557	-.23000000	.23000000
QC3	K1	.146027445727	! .145999743			

KEKB 8 GeV

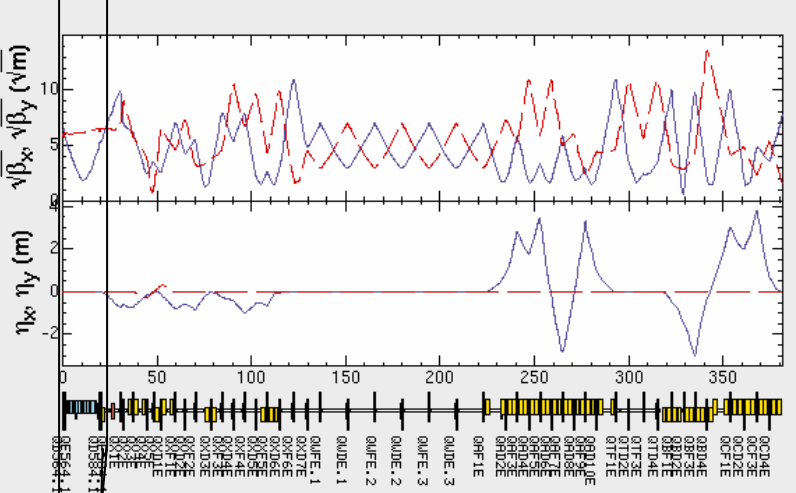


現在のKEKB e- BT

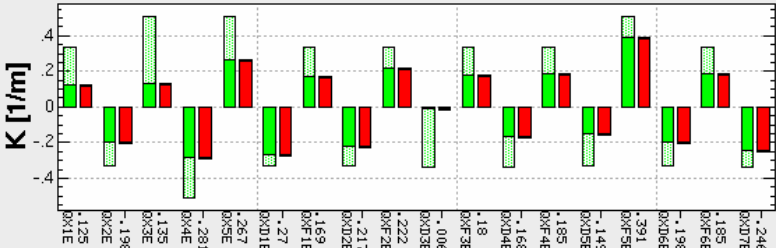
Matching Residual = 2.5877E-24



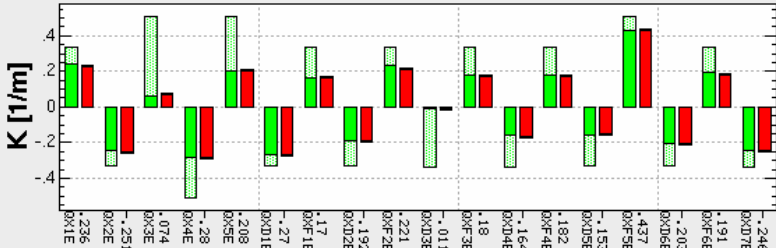
Matching Residual = 9.2638E-28



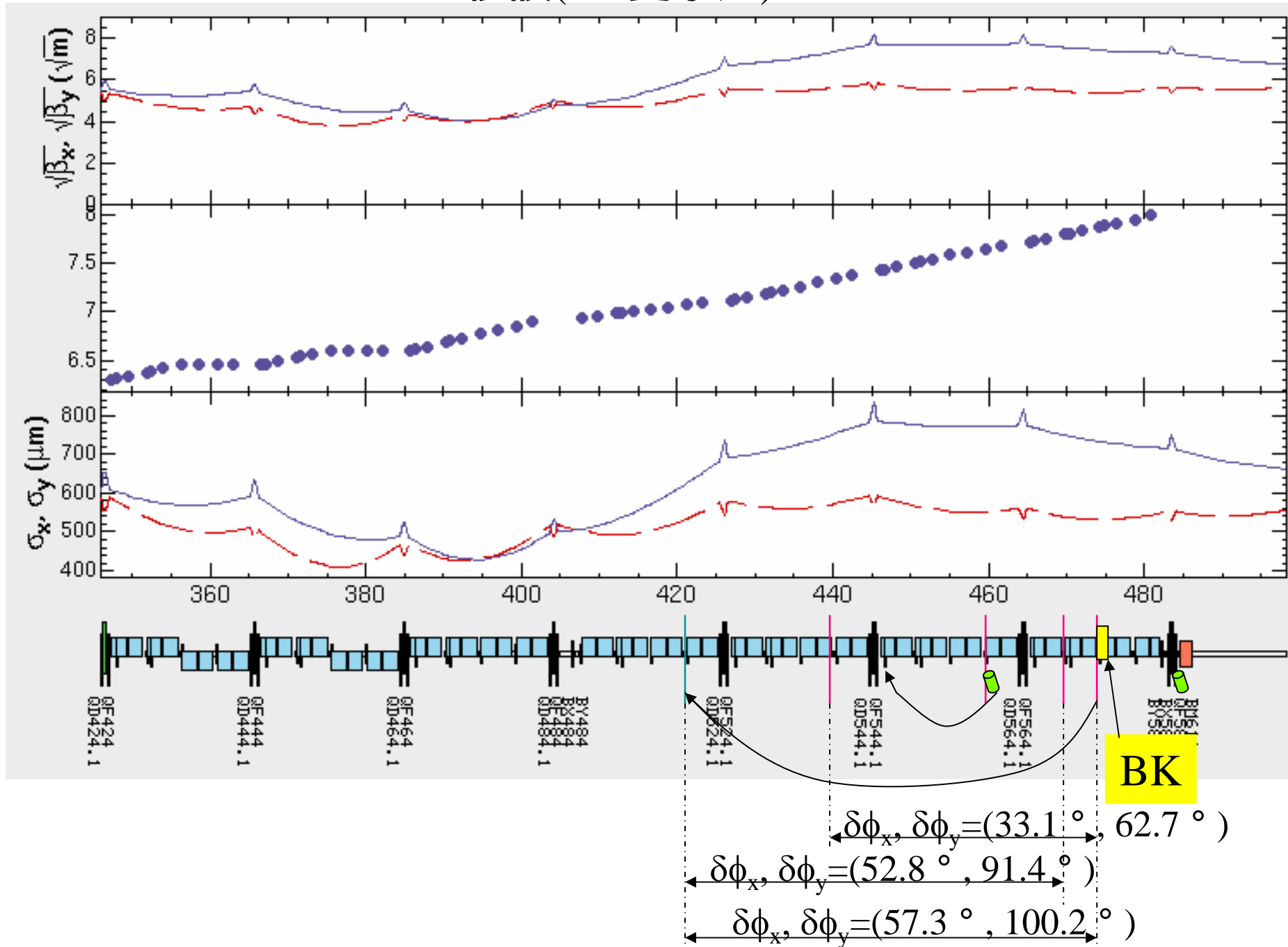
Strength of Free Qmag (QX*)



Strength of Free Qmag (QX*)



Wire Scanner 移設('06夏予定) WS574->WS522



変更：三橋架台

このピットは、使えなくなる。

三橋架台は、このピットの上まで来るが、床から300mmの足をつけるので、ピットとしては使える。

三橋架台

Slit
Screen(Ring)
Screen(Linac)
Shutter

